



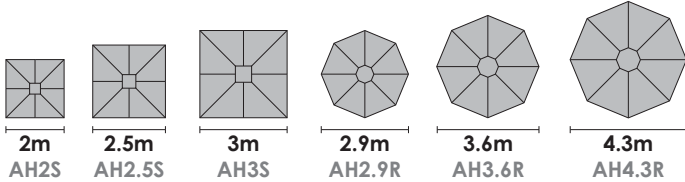
Wind tested and engineer certified **hurricane 160+**
to speeds over 160kph



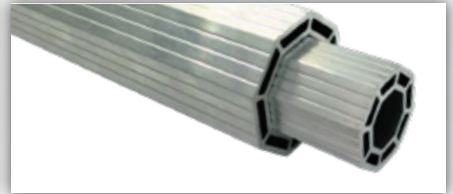
- Twin skin aluminium pole for superior strength
- Each umbrella is fully engineered certified
- Bolt on fabric cover for greater security
- Easy opening operation with no ropes or pulleys
- Matching in-ground stainless steel socket.



on frame, workmanship, materials & cover against fading



Patented Interlock Frame System



Custom Extruded Twin Skin Pole



Bolt on Fabric Cover



In Ground Sockets

Ausbrella is a stunning new umbrella range ideal for harsh areas, resorts, council open areas or simply around the home. With a wide range of features and benefits, all covered by patents pending, this is the umbrella of the future. Setting the highest possible standard for umbrellas and is made in Australia.

Every component from the patented frame with its twin skin centre pole, the design registered interlock system and the acrylic canvas cover is of the very best quality available.

No expense had been spared in being the very best in quality and safety.

The **Hurricane 160+** range of cafe umbrellas are designed and engineered with a wind rating of over 160km/h.



sales@ausbrella.com

Asigns PtyLtd

1800 417 888

www.ausbrella.com